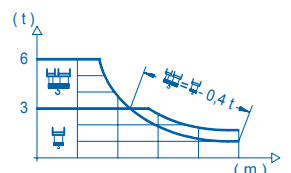
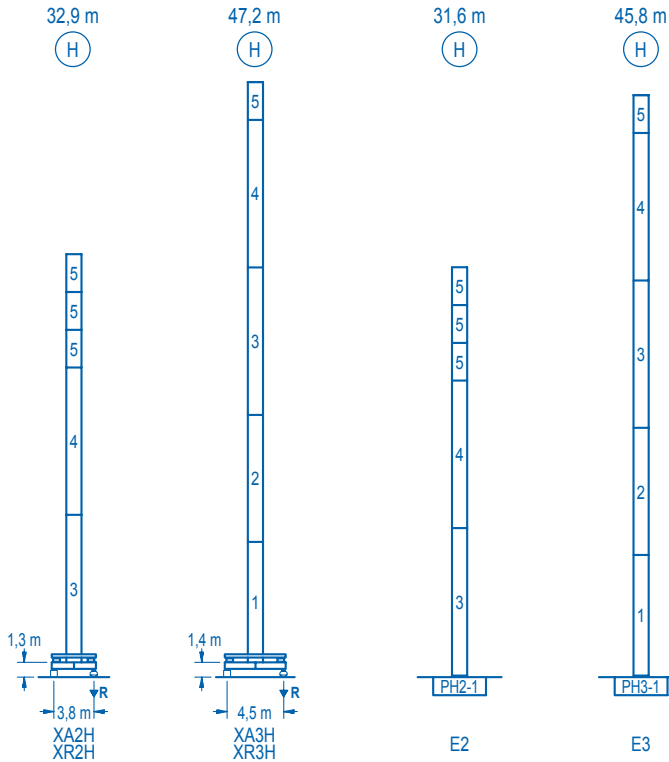


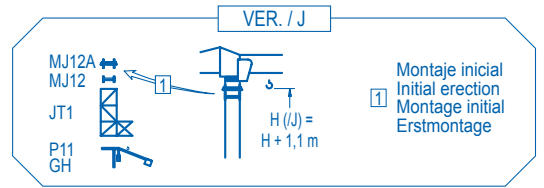
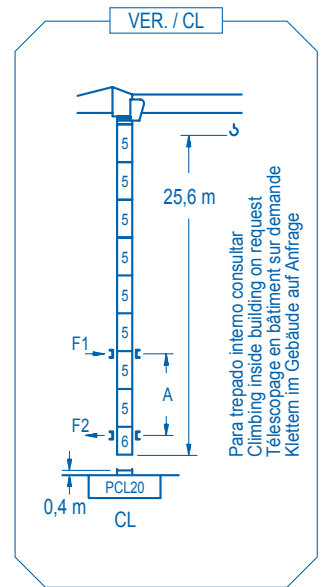
CE EN 14439
(C/25)

| R (m) | H ₁ | | | | | | H ₂ | | | | | | | | | | | | |
|-------------|----------------|------|------|------|------|------|----------------|------|------|------|------|------|------|------|------|------|------|------|------|
| | 12,8 | 14 | 16 | 18 | 20 | 22,4 | 24,9 | 28 | 30 | 32 | 35 | 37,5 | 40 | 42,5 | 45 | 47,5 | 50 | 52,5 | |
| 52,5 | 6000 | 5390 | 4580 | 3960 | 3460 | 3000 | 3000 | 2610 | 2410 | 2230 | 2000 | 1840 | 1700 | 1580 | 1470 | 1370 | 1280 | 1200 | m kg |
| 50,0 | 6000 | 5820 | 4960 | 4290 | 3760 | 3000 | 3000 | 2830 | 2610 | 2420 | 2180 | 2000 | 1850 | 1720 | 1600 | 1490 | 1400 | 1300 | m kg |
| 47,5 | 6000 | 5830 | 4960 | 4300 | 3770 | 3000 | 3000 | 2840 | 2620 | 2430 | 2180 | 2010 | 1860 | 1720 | 1610 | 1500 | 1400 | 1300 | m kg |
| 45,0 | 6000 | 5230 | 4530 | 3980 | 3530 | 3000 | 3000 | 2790 | 2580 | 2360 | 2120 | 1960 | 1820 | 1700 | 1600 | 1500 | 1400 | 1300 | m kg |
| 42,5 | 6000 | 5420 | 4700 | 4130 | 3670 | 3000 | 3000 | 2870 | 2660 | 2400 | 2210 | 2040 | 1900 | 1770 | 1670 | 1570 | 1470 | 1370 | m kg |
| 40,0 | 6000 | 5550 | 4820 | 4240 | 3760 | 3200 | 3200 | 2950 | 2730 | 2460 | 2270 | 2100 | 1960 | 1860 | 1760 | 1660 | 1560 | 1460 | m kg |
| 37,5 | 6000 | 5500 | 4770 | 4200 | 3730 | 3170 | 3000 | 2930 | 2710 | 2440 | 2250 | 2100 | 1960 | 1860 | 1760 | 1660 | 1560 | 1460 | m kg |
| 35,0 | 6000 | 5620 | 4880 | 4290 | 3810 | 3240 | 3000 | 2990 | 2780 | 2500 | 2300 | 2150 | 2000 | 1900 | 1800 | 1700 | 1600 | 1500 | m kg |
| 30,0 | 6000 | 5430 | 4710 | 4140 | 3670 | 3000 | 3000 | 2910 | 2900 | 2900 | 2900 | 2900 | 2900 | 2900 | 2900 | 2900 | 2900 | 2900 | m kg |





| h (m) | | h (m) | |
|---------------------------|---------------|-------|------|
| □ (m) | | □ (m) | |
| n° | Ref. | □ | h |
| 1 | MT123 | 1,2 | 10,1 |
| 2 | MT123A | 1,2 | 10,1 |
| 3 | MH124A | 1,2 | 11,8 |
| 4 | MH124-1 | 1,2 | 11,8 |
| 5 | MH121 | 1,2 | 3,0 |
| 6 | CL20 | 1,2 | 2,2 |
| MH124-1 = 4xMH121 - 0,2 m | | | |
| ⊖ | H = H + 0,2 m | | |
| ○ | H = H | | |
| △ | H = H | | |
| ⊕ | H = H - 0,2 m | | |



| | | | | |
|-------|------|------|------|------|
| | XA2H | XA3H | E2 | E3 |
| A max | 27,9 | 42,4 | 26,6 | 41,0 |
| B max | - | 18,0 | - | 18,0 |
| C max | 24,1 | 24,1 | 24,1 | 24,1 |
| H max | 52,0 | 70,0 | 66,5 | 84,5 |

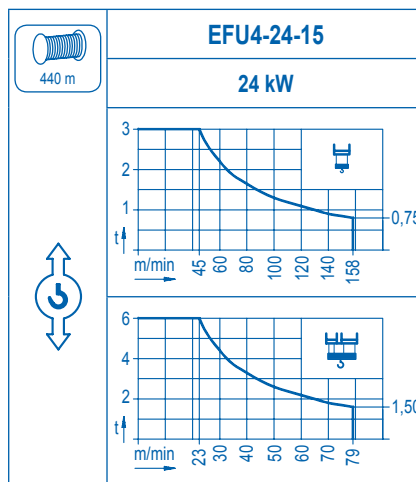
| | | | | |
|----------------|--------------|------------------|-------------------|------------------|
| R. máx. | En servicio | | Fuera de servicio | |
| | In operation | XR2H..... 43,0 t | Out of service | XR2H..... 41,9 t |
| | En service | XR3H..... 51,1 t | Hors service | XR3H..... 74,6 t |
| | In Betrieb | | Ausser Betrieb | |

Para otras zonas de viento o alturas superiores consultar
 For other wind zones or additional hook heights on request
 Pour d'autres zones de vent ou des hauteurs supplémentaires sur demande
 Für andere Windzonen oder weiteren Hakenhöhen auf Anfrage

| | |
|--------------|----------------|
| | CFU-4.0 |
| | 4 kW |
| 0 ⇄ 90 m/min | |

| | |
|-------------|------------------|
| | GR-4.5 |
| | 2 x 45 Nm |
| 0 ⇄ 0,7 rpm | |

| | | |
|--|------------------|------------------|
| | TS2-4.5 | TS2-5.5 |
| | 2 x 45 Nm | 2 x 55 Nm |
| | 0 ⇄ 20 m/min | |
| | XR2H | XR3H |



| | |
|-------------------------|--------------|
| Tensión de alimentación | 400 V |
| Operating voltage | 3 ph |
| Tension de service | 50 Hz |
| Betriebsspannung | |

| | |
|------------|----------|
| Opcional | * |
| Optional | |
| En option | |
| Kaufoption | |